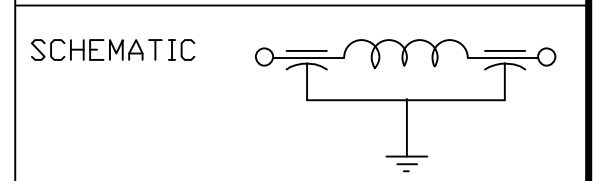


LEAD FINISH: TIN/SILVER	
BUSHING FINISH: SILVER	
CAPACITANCE	2000 pF GMV.
TEMP. RANGE	-55°C TO 125°C
CURRENT	25 AMP MAX.
WORKING VOLTAGE	85°C 1000 VDC MAX. 125°C 700 VDC MAX.
D.C. RESISTANCE	.01ohms MAX.
MIN. I.L. PER MIL-STD-220 AT 25°C NO LOAD	
FREQ. MHZ	I.L. (db)
10	5
30	20
100	50
300	55
1 GHz	




PART: FS005 (FAIRVIEW)  
 FS005M (MEXICO)  
 BAG: 1202F-005  
 XXX DATE CODE  
 XXX QTY./BAG  
 (50/ BAG MAX.)

- NOTES:
- HARDWARE IS INCLUDED
  - MAXIMUM POTTING TORQUE=7LBS-IN
  - SUGGESTED MOUNTING HOLE Ø.328[8.34]
  - PRE FLATTEN/NOTCH DIMENSIONS  
 TOP-.542±.010  
 BOTTOM-.730±.010

- THIS IS A LEAD FREE PRODUCT.
- MAX REFLOW IS 245°C FOR 5 SEC.



	02	01	00	REV. NO.	UNLESS OTHERWISE SPECIFIED DIMENSIONS ARE IN INCHES. [MILLIMETERS] DO NOT SCALE.	TOLERANCES UNLESS OTHERWISE SPECIFIED Fractions ± 1/64 Dec. .xx± Dec. .xxx± .010 Angles ±0° 30'	 SPECTRUM CONTROL INC. ERIE, FAIRVIEW PENNSYLVANIA
	CN 30481-CPD	CN 28460-CPD	CN 18632-CPD	CHANGE NOTICE			
							Description Pi RESIN SEAL FILTER 1202F-005