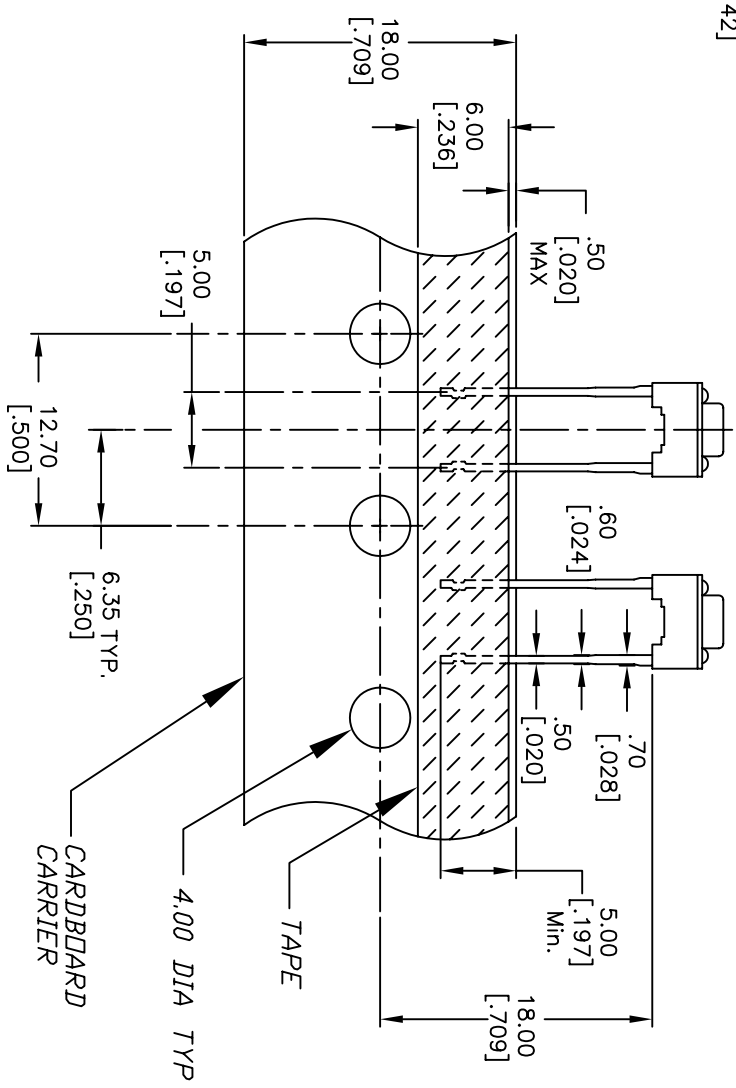
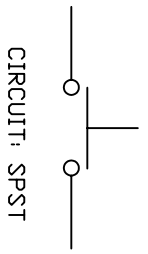


RECOMMENDED P.C.B. LAYOUT



- NOTES:
1. ALL DIMENSIONS IN MM [INCH]
 2. GENERAL TOLERANCE: X.X=±0.4 X.XX=±0.25
 3. CONTACT RATING: 50mA @12V DC
 4. CONTACT MATERIAL: SILVER
 5. OPERATING FORCE: 100±50gf
 6. TRAVEL: 0.25 +0.2/-0.1
 7. CONTACT RESISTANCE: 100mILLI Ohms max.
 8. ELECTRICAL LIFE: 100,000 CYCLES
 9. PACKAGING:
CARRIER IS FOLDED EVERY 25 PITCHES
(24) SWITCHES PER FOLD
(1,000) SWITCHES PER BOX
 10. 2002/95/EC (ROHS) COMPLIANT
 11. ▲ DENOTES MAJOR DIMENSION.

F	16885	UPDATE NOTES, .30 TO .25	1/18/07	TN
E	14155	ADD METAL COVER CALLOUT	7/8/04	AR
D	14110	ADD COLOR OF ACTUATOR	6/22/04	AR
C	11623	ADD Q TO DESCRIPTION	12/11/02	CB
REV.	ECN No.	DESCRIPTION	DATE	CHKD

SCALE		DATE		DR		DWG		REV	
2:1		1/18/07		TN		P010555		F	
TITLE					E-SWITCH				
					TL59AF100Q				

THE INFORMATION CONTAINED IN THIS DOCUMENT IS PROPRIETARY TO E-SWITCH AND IS NOT TO BE COPIED OR TRANSMERED