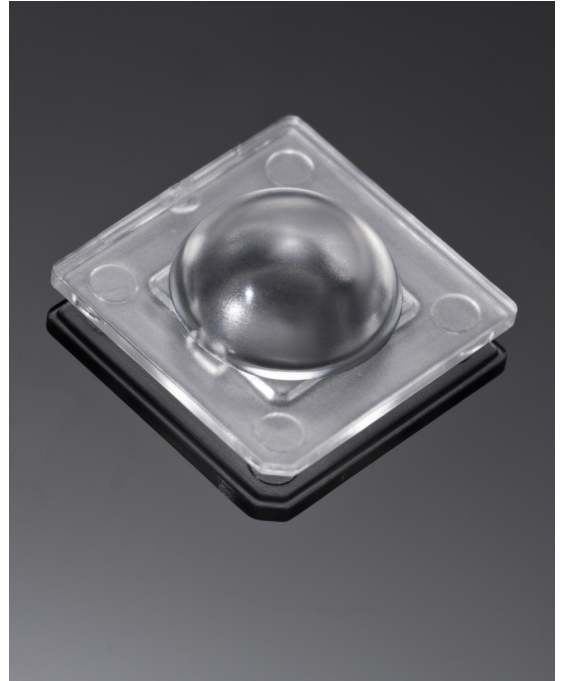


SIRI-DIFF

~145° wide diffused beam. Assembly with installation tape.

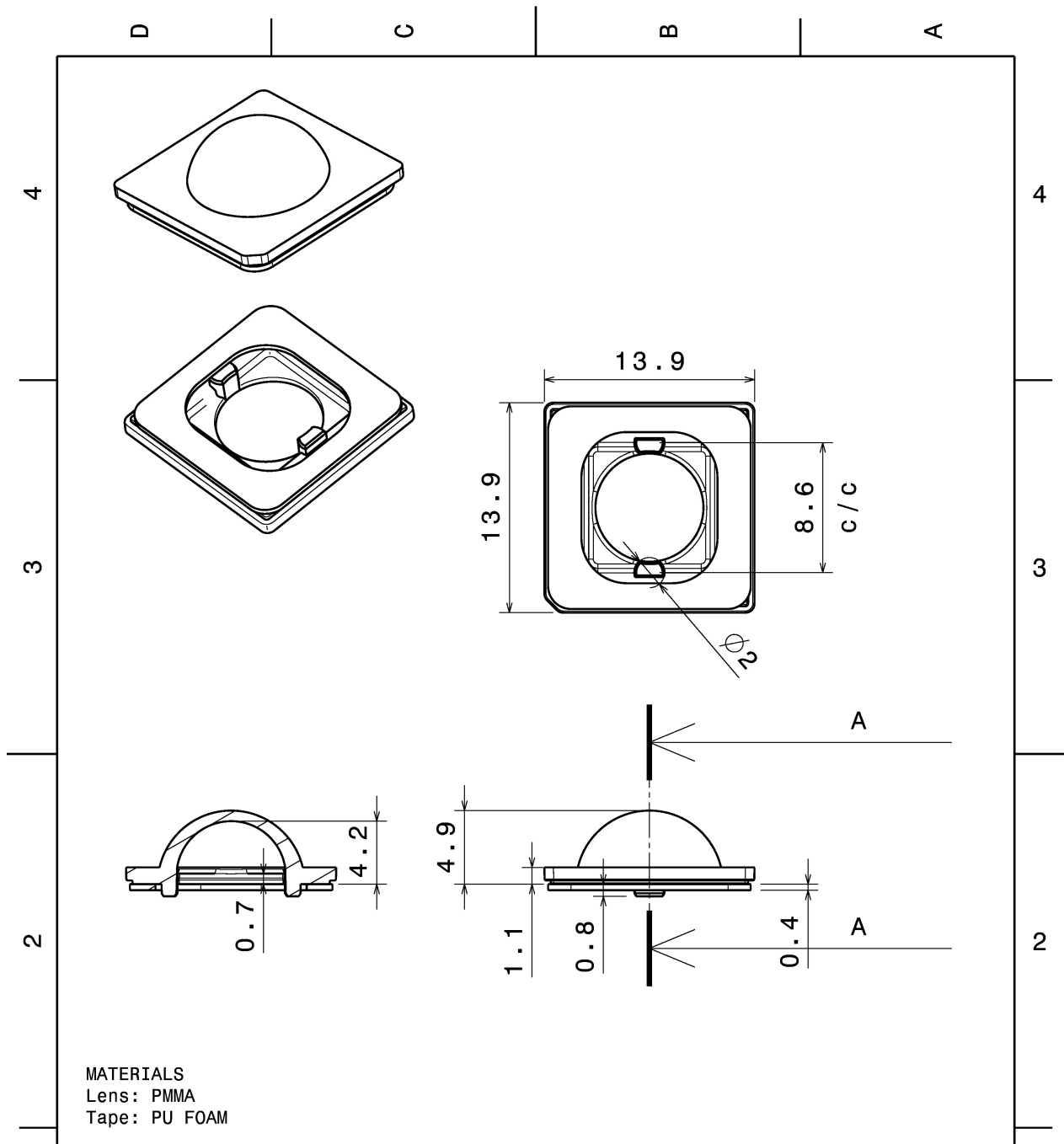
TECHNICAL SPECIFICATIONS:


Dimensions	13.9 + 13.9 mm
Height	5.3 mm
Fastening	tape
Colour	clear
Box size	
Box weight	2.9 kg
Quantity in Box	5488 pcs
ROHS compliant	yes ⓘ



MATERIAL SPECIFICATIONS:

Component	Type	Material	Colour
SIRI-DIFF	Lens	PMMA	clear
SIRI-TAPE	Tape	PU tape	



This drawing is our property. It can't be reproduced or communicated without our written agreement.		 Ledil Oy Salorankatu 10 FIN 24240 SALO Finland		Ledil Oy Salorankatu 10 FIN-24100 SALO Finland	
DRAWING TITLE		Datashet SIRI-DOME/-DIFF assy			
DRAWN BY	DATE	SIZE	PART NUMBER	REV	
as	23.07.2012	A4		001	
CHECKED BY	DATE	SCALE	WEIGHT	SHEET	
ol	23.07.2012	1:1		1/1	
DESIGNED BY	DATE				
pv	23.11.2011				

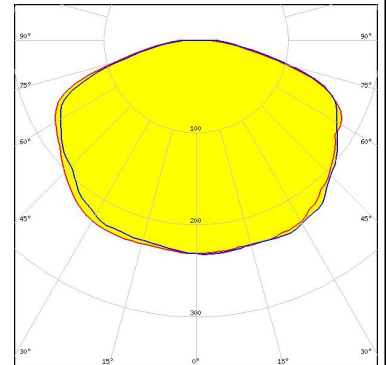
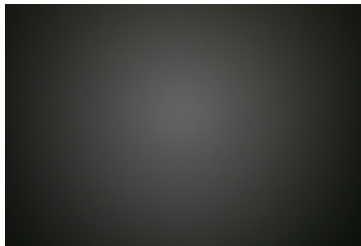
PHOTOMETRIC DATA (MEASURED):



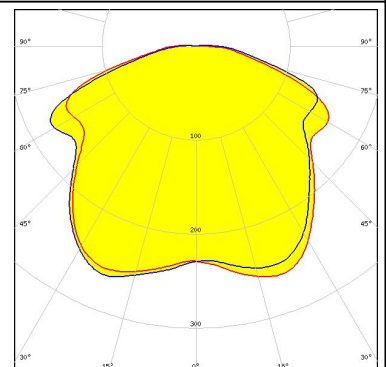
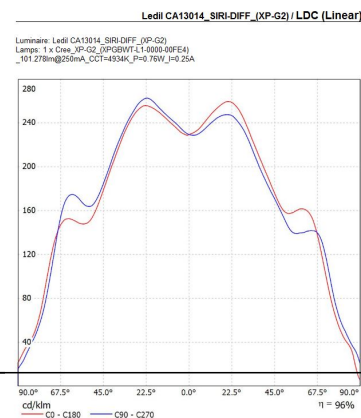
LED XM-L
 FWHM 144.0°
 Efficiency 96 %
 Peak intensity cd/lm
 Required components:



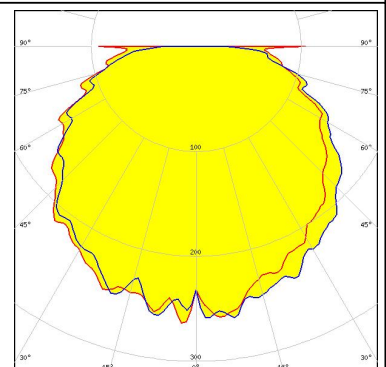
LED XM-L2
 FWHM 147.0°
 Efficiency 95 %
 Peak intensity 0.200 cd/lm
 Required components:



LED XP-G2
 FWHM 140.0°
 Efficiency 96 %
 Peak intensity 0.260 cd/lm
 Required components:



LED XT-E
 FWHM 148.0°
 Efficiency 95 %
 Peak intensity 0.230 cd/lm
 Required components:



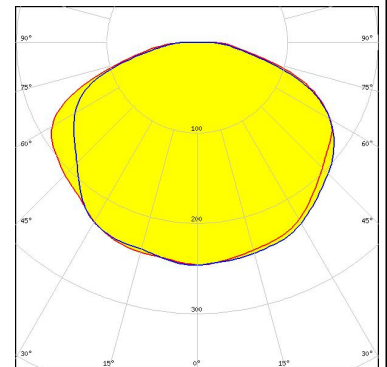
PHOTOMETRIC DATA (MEASURED):

LUMILEDS

LED LUXEON A
FWHM 142.0°
Efficiency %
Peak intensity cd/lm
Required components:

NICHIA

LED NS9x383
FWHM 139.0°
Efficiency 94 %
Peak intensity 0.250 cd/lm
Required components:



NICHIA

LED NVSxx19B/NVSxx19C
FWHM 146.0°
Efficiency 96 %
Peak intensity 0.220 cd/lm
Required components:

OSRAM Opto Semiconductors

LED Oslon Square EC
FWHM 132.0°
Efficiency %
Peak intensity cd/lm
Required components:

GENERAL INFORMATION:

NOTE: The typical beam angle will be changed by different color, chip size and chip position tolerance. The typical total beam angle is the full angle measured where the luminous intensity is half of the peak value.

MATERIALS:

As part of our continuous research and improvement processes, and to ensure the best possible quality and availability of our products, LEDiL reserves the right to change material grades without notice.

PRODUCT DATA USER AGREEMENT AND DISCLAIMER:

The measured data in the provided downloadable LEDiL Product Datasheets and Mechanical 2D-Drawings is rounded and provided as reference for planning. LEDiL Oy's optical specifications have been verified by conducting performance testing of the products in accordance with the company's quality system. The reported data are averaged results of multiple measurements with typical variation. LEDiL Oy reserves the right to without prior notification make changes and improvements to its products.

LEDiL Oy assumes neither warranty, nor guarantee nor any other liability of any kind for the contents and correctness of the provided data. The provided data has been generated with highest diligence but the provided data may in reality not represent the complete possible variation range of all intrinsic parameters. Therefore, in certain cases a deviation from the provided data could occur.

LEDiL Oy reserves the right to undertake technical changes of its products without further notification which could lead to changes in the provided data. LEDiL Oy assumes no liability of any kind for the possible deviation from any provided data or any other damage resulting from the usage of the provided data.

The user agrees to this disclaimer and user agreement with the download or usage of the provided files.

LEDiL Oy

Joensuunkatu 13
FI-24240 SALO
Finland

LEDiL Inc.

228 West Page Street
Suite D
Sycamore IL 60178
USA

Local sales and technical support

[www.ledil.com/
where_to_buy](http://www.ledil.com/where_to_buy)

Shipping locations

Salo, Finland
Hong Kong, China

Distribution Partners

[www.ledil.com/
where_to_buy](http://www.ledil.com/where_to_buy)