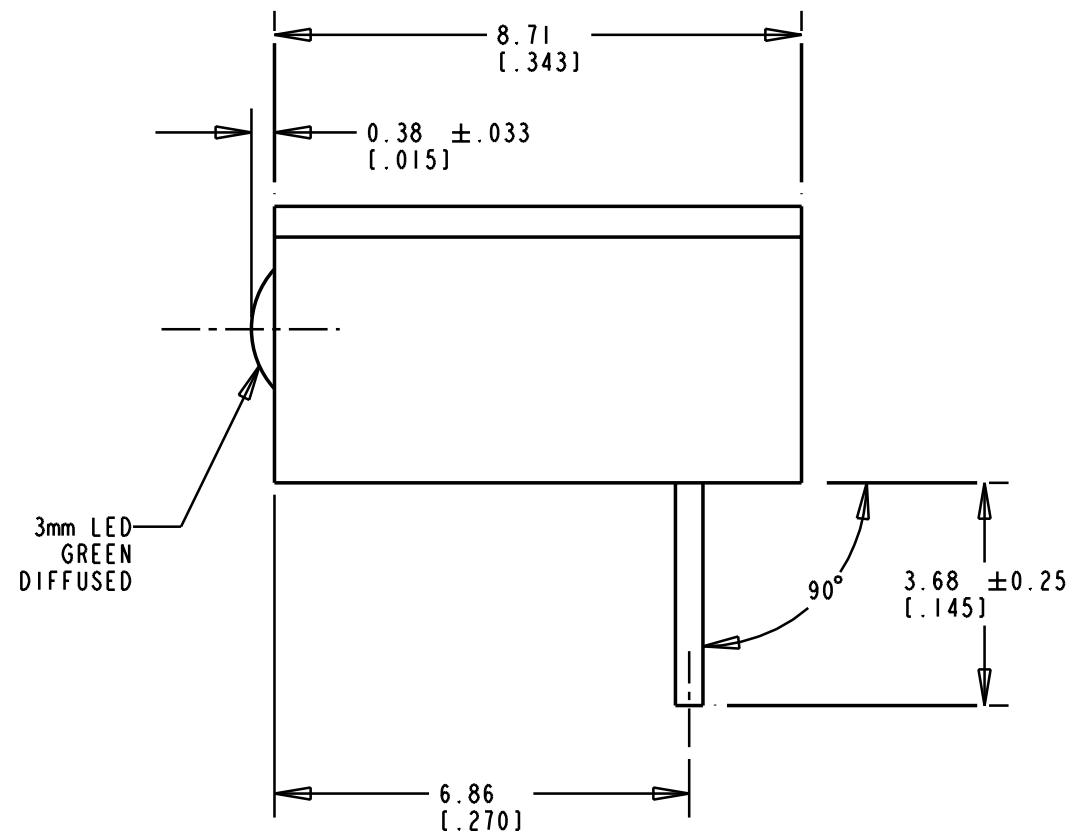
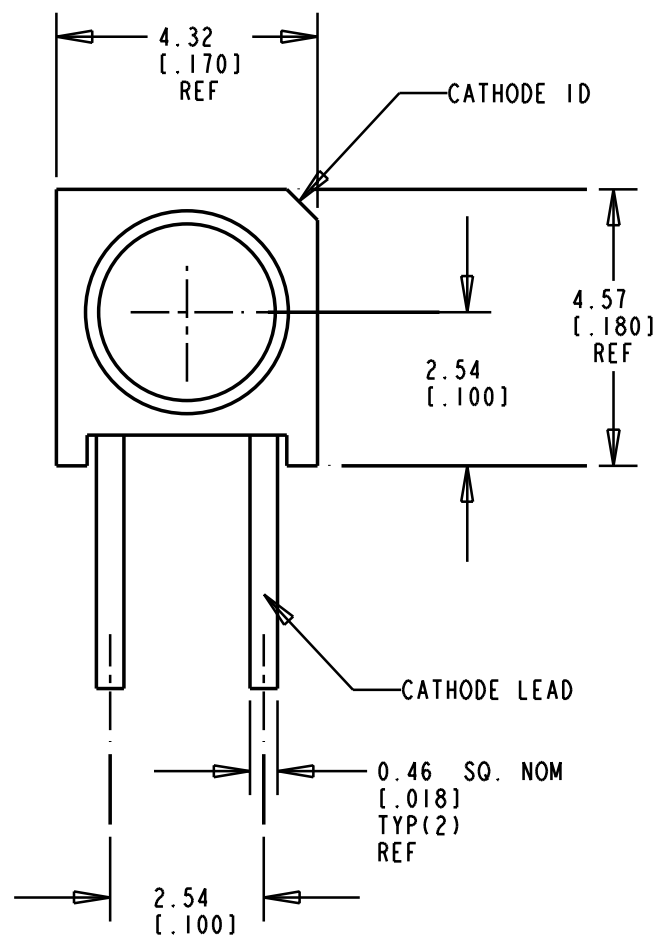
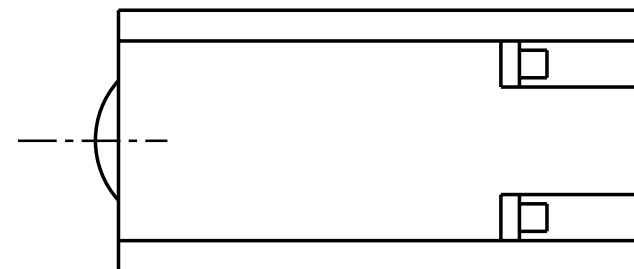
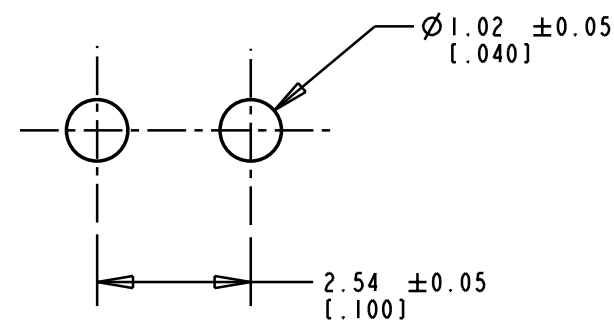


REV.	ECN NO.	REVISIONS	DRN.	CKD.	APP.	DATE
A	—	NEW RELEASE	TC			



3mm LED  
GREEN  
DIFFUSED



OPERATING CHARACTERISTICS AT 25°C AMBIENT GREEN DIFFUSED					
CHARACTERISTICS	MIN	TYP	MAX	UNITS	TEST CONDITIONS
LUMINOUS INTENSITY	4.7	12.6			$I_f = 10 \text{ mA}$
FORWARD VOLTAGE		2.1	2.8		$I_f = 20 \text{ mA}$
REVERSE CURRENT			100	$\mu\text{A}$	$V_R = 5 \text{ V}$
PEAK EMISSION WAVELENGTH		565			
VIEWING ANGLE		60		Degree	

RECOMMENDED PC BOARD HOLE PATTERN

LED COLOR = GREEN DIFFUSED			
ABSOLUTE MAXIMUM RATING AT 25°C AMBIENT		UNITS	GREEN
POWER DISSIPATION		mW	100
CONTINUOUS FORWARD CURRENT		mA	30
DERATE LINEARLY FROM 50°C		mA/°C	0.4
PEAK FORWARD CURRENT (1/10 DUTY CYCLE, 0.1 ms PULSE WIDTH)		mA	120
LEAD SOLDERING TEMPERATURE, 5 SEC., 1.60mm [1/16"] FROM BODY		°C	260
OPERATING TEMPERATURE		°C	-55 TO +100
STORAGE TEMPERATURE		°C	-55 TO +100

NOTES:

- LEADS TO FIT INTO HOLES SPACED AS PER PATTERN.
- LEAD SPACING MEASURED AT HOUSING EXIT.
- DIALIGHT PART NUMBER: 551-0202-808

THIS DRAWING AND THE CONTENTS HEREIN ARE CONFIDENTIAL AND THE SOLE PROPERTY OF DIALIGHT. REPRODUCTION OF THIS DRAWING OR CONSTRUCTION OF ANY PARTS WITHIN THIS DRAWING ARE FORBIDDEN WITHOUT THE WRITTEN CONSENT OF DIALIGHT.

SCALE 8:1 mm	DRAWING NUMBER	REV
ALL DIM'S IN: [INCHES]	C-16609	A
TOLERANCES: UNLESS OTHERWISE SPECIFIED	TITLE	
FRACTIONS: ±1/64	MATERIAL	
DECIMALS (.XX): ±.020		
DECIMALS (.XXX): ±.015		
ANGLES: ±3°	1913 ATLANTIC AVE. MANASQUAN, N.J. 08736	
FINISH:	SHEET	OF
FSCM 83330	FAMILY TABLE:	