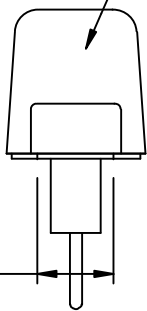


RECOMMENDED CUTOUT

MOUNTING HOLES AS REQUIRED

SCI  
52F257-006  
XXXX - DATE CODE

MARKING:

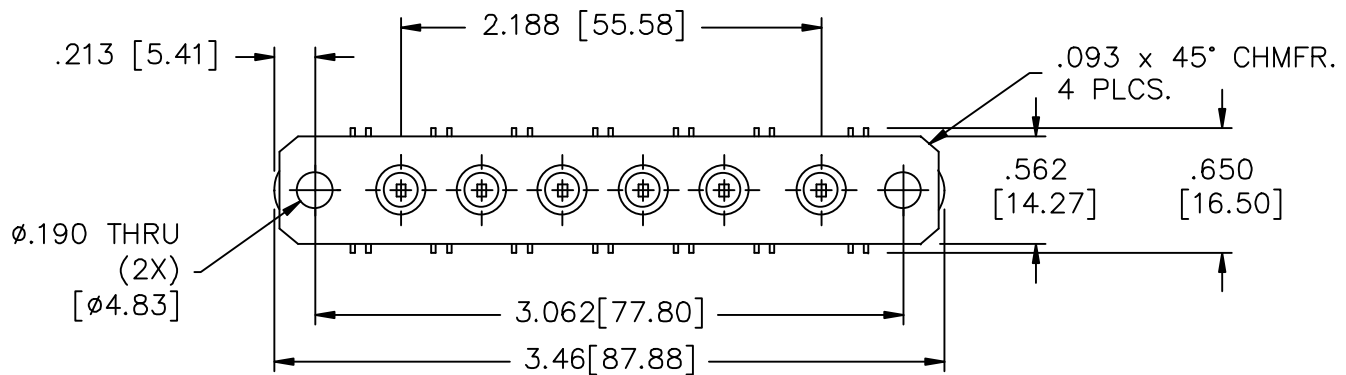
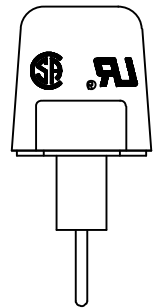
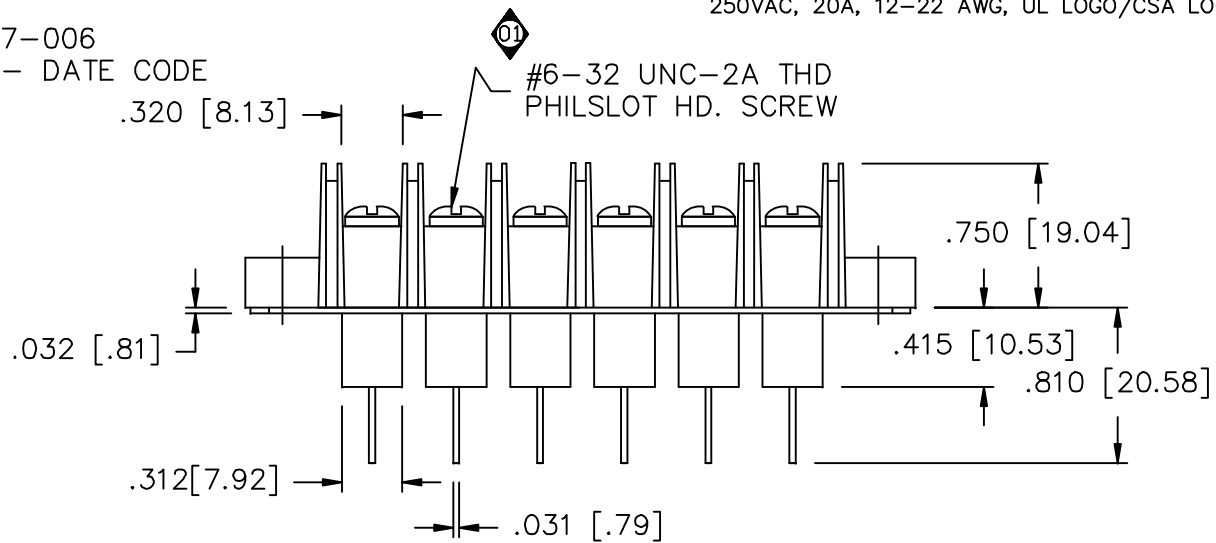


.40 [10.16]

.062 ± .004  
[1.57 ± .10]

NOTES:

- 1) VOLTAGE: 250 VAC
- 2) CURRENT: 20 AMPS.
- 3) OPERATING TEMPERATURE: -55°C TO +105°C.
- 4) MATERIAL: BLACK THERMOPLASTIC OR EQUIV.
- 5) SCREW TYPE: #6-32 PHILSLOT HD.
- 6) GROUND PLANE: .032" FLAT WITHIN .012".
- 7) MARKING: 4 PT. CHARACTERS, WHITE INK - CURE @ 65°C, 4Hrs.
- 8) CAPACITANCE: 2000pF MIN/5200pF MAX.
- 9) SEE ROUTING FOR PAKAGING LABELS.
- 10) ALL SHIPPING TRAYS MUST HAVE A LABEL CONTAINING THE FOLLOWING INFORMATION SCI 52F257-006 DATE CODE 250VAC, 20A, 12-22 AWG, UL LOGO/CSA LOGO



TEST SEQUENCE				
STEP	DESCRIPTION	TEST METHOD	PASS	FAIL
STEP 0100	INSPECTION	VISUAL/MECH	PASS	FAIL
PER IT 38-0468 INSPECT DIMENSIONS AND WORKMANSHIP. PER MIL-STD-105, LEVEL II, 1%AQL COMMENTS: 100%		OPER:		
STEP 0200	TESTING	CAP./D.F.	PASS	FAIL
PER IT 38-0245 CAP: 2000pF TO 5200pF DF: ≤4% MAX COMMENTS: 100%		OPER:		
STEP 0300	TESTING	DWV	PASS	FAIL
PER IT 38-0245 DWV: 1500 VAC 25°C 1 MINUTE MINIMUM COMMENTS: 100%		OPER:		
STEP 0400	TESTING	I.R.		
PER IT 38-0245 IR: 350VDC, 1000 Mohms MIN. 2 MINUTES MAX. COMMENTS: 100%				

1	0	REV. NO.	UNLESS OTHERWISE SPECIFIED DIMENSIONS ARE IN INCHES. (MILLIMETERS)	TOLERANCES UNLESS OTHERWISE SPECIFIED Fractions ± 1/64 Dec. .xx ± .03 Dec. .xxx ± .020 Angles ± 0° 30'	 FAIRVIEW PENNSYLVANIA Description FILTER TERMINAL BLOCK
CN 4631B-ENG	CN 28564-CPD	CHANGE NOTICE	DO NOT SCALE. THIRD ANGLE PROJECTION	CODE IDENT. NO. DLSP2 Date 3-18-09 App'd Grunauer Sheet 1 of 1	