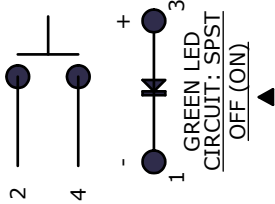
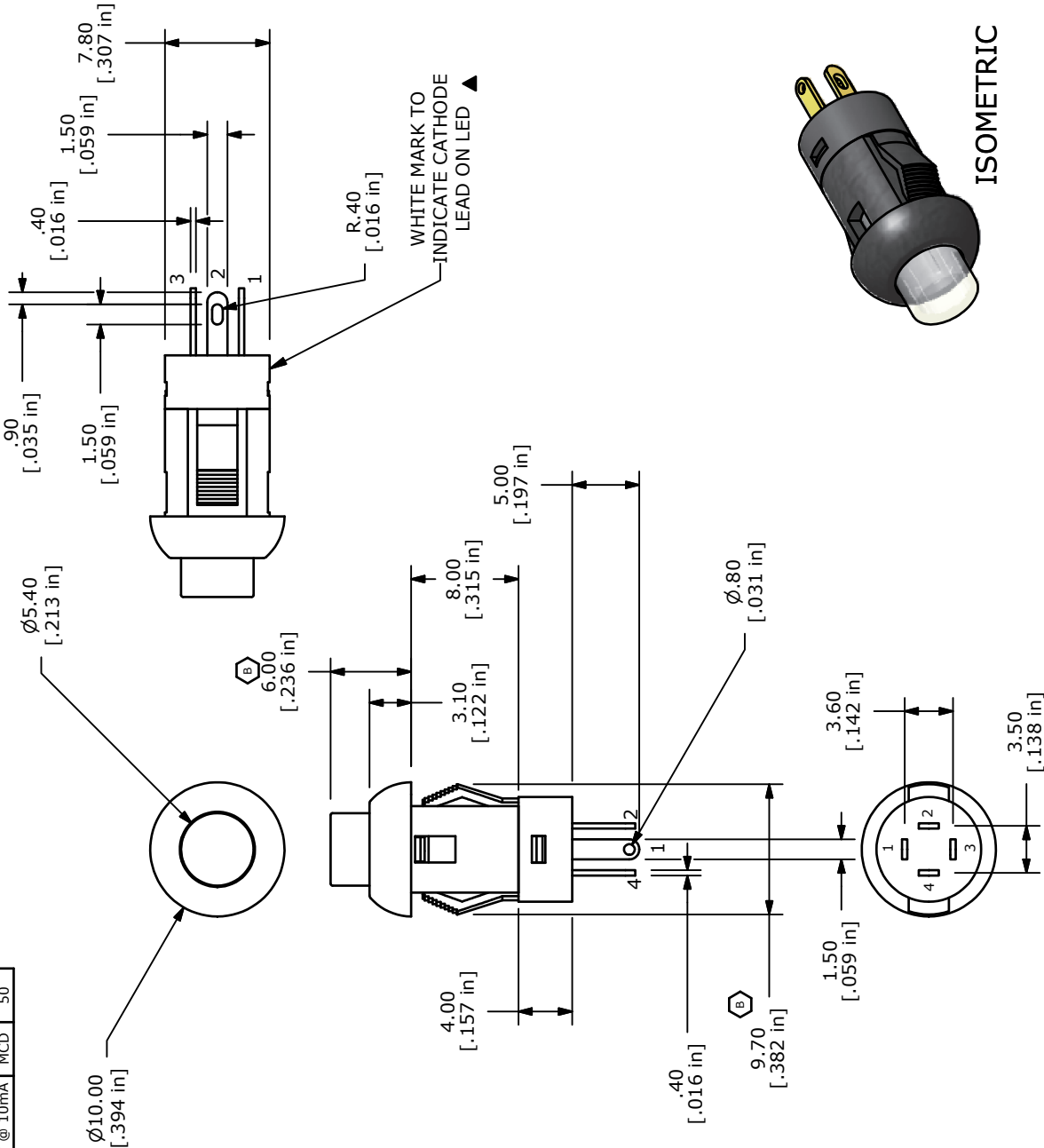




| T       | D       |
|---------|---------|
| 1.0-2.0 | 8.0-8.2 |
| 2.0-2.5 | 8.2-8.4 |
| 2.5-3.0 | 8.4-8.6 |



| ▲ LED SPECS               | UNITS | GREEN   |
|---------------------------|-------|---------|
| FORWARD CURRENT           | mA    | 20      |
| FORWARD VOLTAGE @20mA     | V     | 2.0-2.4 |
| LUMINOUS INTENSITY @ 10mA | MCD   | 50      |



ISOMETRIC

NOTES:

- ALL DIMENSIONS IN MM [INCH]
- GENERAL TOLERANCE: X.X=±0.4  
X.XX=±0.25
- RATING: 30VDC @ 100mA
- CONTACT RESISTANCE: 50mΩ MAX.
- INSULATION RESISTANCE: 100MΩ MIN@500VDC.
- OPERATING FORCE: 250±100gf
- TRAVEL: 1.8±0.3mm
- OPERATING TEMPERATURE: -40°C TO 85°C
- OPERATING LIFE: 50,000 CYCLES
- LED: GREEN
- ▲ DENOTES CRITICAL PARAMETERS
- 2002/95/EC (ROHS) COMPLIANT



E-SWITCH™

TITLE LP10A1AG

CHANGED DIMS was 9.6 & 6.1

New Release

9/24/08

rc

DESCRIPTION

DATE

BY

THE INFORMATION CONTAINED IN THIS DOCUMENT IS PROPRIETARY TO E-SWITCH AND IS NOT TO BE COPIED OR TRANSFERRED

SCALE 2=1

DATE 7/10/2008

DR rc

DWG

B200202

REV B