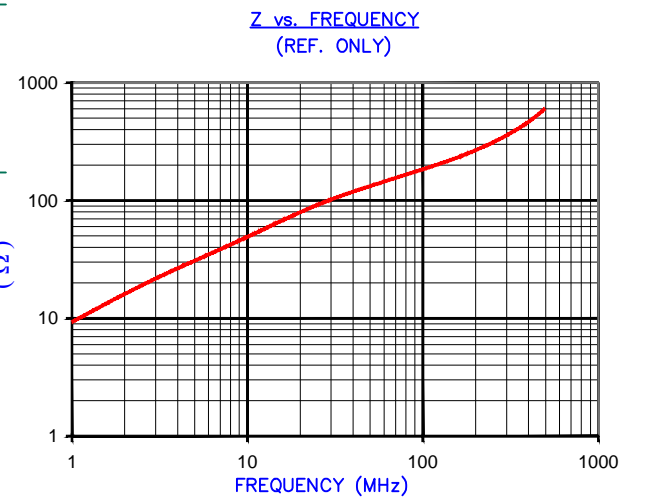
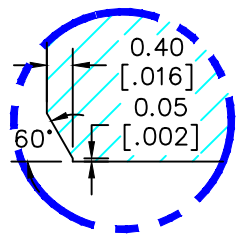


IMPEDANCE (Z)			
Frequency	25 MHz	100 MHz	300 MHz
Nominal (REF)	93 Ω	187 Ω	356 Ω
Minimum	- Ω	150 Ω	- Ω



AGILENT E4991A Impedance/Material Analyzer
HP 16092A-Test Fixture TEST REF. 2968



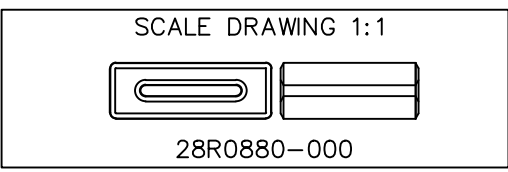
UNCONTROLLED DOCUMENT

FERRITE CORE DIMENSIONS (SPEC): mm [in]

A	22.35 [.880]	+ 0.51 [.020]
B	14.00 [.551]	+ 0.25 [.010]
C	19.05 [.750]	+ 0.51 [.020]
D	7.75 [.305]	+ 0.30 [.012]
E	1.50 [.059]	+ 0.25 [.010]

WEIGHT/1000 14.25 kgs [31.42Lbs]

NOTES: UNLESS OTHERWISE SPECIFIED
1. COSMETIC SPECIFICATION REFER TO WI-QA-038.



DIMENSIONS ARE IN mm[INCHES].				This print is the property of Laird Tech. and is loaned in confidence subject to return upon request and with the understanding that no copies shall be made without the written consent of Laird Tech. All rights to design or invention are reserved.		Laird	
Q	UPDATE THE LOGO	05/26/15	QIU	PROJECT/PART NUMBER:	REV	PART TYPE:	DRAWN BY:
P	CHANGED DETAIL A AND UPDATE TEMPLATE	03/02/12	Jcai	28R0880-000	Q	FERRITE RIBBON CORE	BAC
N	UPDATE Z SPECS & COMPANY LOGO	07/27/07	JRK	DATE:	SCALE:	MATERIAL:	
M	UPDATE Z SPECS ADJUST DIM C & D TOL PER ENGR & ADD TEST REF. #	11/16/04	TMB	04/15/92	3 : 1	Ferrite	
REV	DESCRIPTION	DATE	INT	CAD # 28R0880-000-Q	TOOL #	R0880	